

Prochem



COMPANY PROFILE

About Company

PROCHEM is a total solutions construction management company bringing forth all-encompassing construction management solutions from start to finish – from pre-construction to delivery. PROCHEM has emerged as a company that delivers time and cost effective solutions to its vast and diverse client all over the Qatar, adding value and simplifying life for its clients/customers. In order to meet challenges of the future, PROCHEM has on board skilled professionals from the diverse fields of management and engineering backed by world class equipment that is continuously improved to ensure global standards of environment resources and deliverables.

With 19+ years of direct, hands-on experience in the field, fast-tracking takes center stage in our services while ensuring the fulfillment of your needs and expectations, on budget and on time.

Ultimately, we aspire to become your business partners rather than business executives, and to achieve that objective, we introduce you to an ultra-modern definition of the industry – one that's customer-centric, results-oriented, and tailored to your project. With us, you get a glimpse of luxury service, regardless of the size of your project, all with the support of our team members, who are the driving force behind our success.

MISSION

PROCHEM is a leader in providing value-added construction services to our customers by creating a successful partnership with them throughout the project.

Our pledge is to establish lasting relationships with our customers by exceeding their expectations and gaining their trust through exceptional performance by every member of the project team.

OUR PHILOSOPHY

AT PROCHEM is about understanding how to integrate people, processes and technology to deliver the solution to provide true value to our client's business.

CORE VALUES

- Client Satisfaction
- Employee Empowerment
- Advanced Management
- Continuous Growth
- Accurate Quality
- Reliability



OUR SERVICES

Prochem provides a range of services that end up structuring a winning formula for tackling and managing your construction project effectively.

Our general work scope includes:

Civil Works (including steel and concrete works)

HVAC Works (including energy saving solutions)

ELV Solutions

Electrical Works

Plumbing Works

Equipment rental services (Industrial & Cleaning)

Scaffolding and form work rental

Waste Management

Soft Services

Manpower supply

Electrical Supplies

IT Solutions

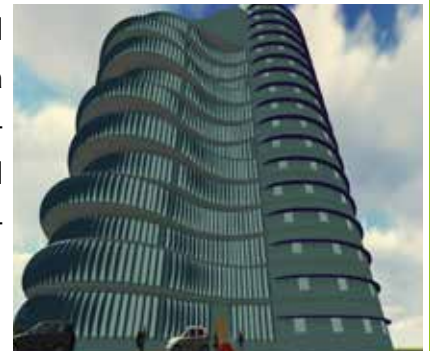
GENERAL CONTRACTOR

We provide general contracting service by bringing together the resources, expertise, skilled labors, we ensure that every project is achieved our common goal, that is to exceed our client's expectations. Our good relationships with our subcontractors and partners enable us to process the huge bargaining power, while not sacrificing the quality and efficiency of works. Our general contract services are allowed for construction, site management, subcontractor management, quality control for construction works, detailed project status report.



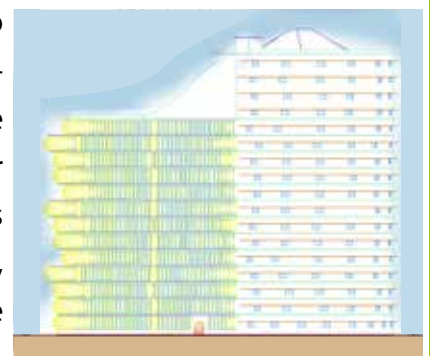
DESIGN CONSULTANT

Combining local and international market knowledge with technical expertise, our architects, interior designers and engineers approach a creative, sustainable and holistic design which form the outset, embraces low-carbon and economic operational performance. Our professional teams strive to deliver visionary buildings that maximize naturally occurring energy and minimize value.



DESIGN & BUILD

Within our experience, resources and management, we are capable to handle the project by one entity of both design and construction project. We encourage this method of project delivery to the clients for the relationship in one "team" concept between designer and contractor would make the construction run smoother. Other certain advantages of Design & Build are the saving significant amounts of time and money, projects can be designed and built quicker and in a more cost effective manner, budgets, procurement of materials, and scheduling can begin before the final design work and documents are completed.



CONSTRUCTION PROJECT MANAGEMENT

Construction management is key to streamline your processes and warrant that every involved stakeholder in the project is held accountable for their project tasks. With the support of such management, any issues can be identified and remediated early on without any hindrances and without compromising on the project's end goal.

Our approach to construction and project management revolves around transparency, honesty, and mutually beneficial relationships. We're your collaborative partner who measures and assesses each decision to calculate their impact on your budget, expected quality, and schedule. We have one objective in mind: to have your project completed on time, within budget, and free of legal complications. Therefore, we optimize the best industry practices, ensure prudent decision-making, and maintain transparency in project controls and reporting.

At PROCHEM, we have our unique structured approach to certify first-rate project delivery, bringing years of experience, intelligence, and creativity to the table with absolutely no risks derailing your entire project. With PROCHEM, agile management is the guiding principle!



OUR CONSTRUCTION MANAGEMENT SERVICES INCLUDE

- Collaborating with key personnel, stakeholders, and decision makers to assure the completion of project requirements and milestones according to the specified schedule
- Accelerating shop drawings and samples for review and approval
- Upholding exemplary standards for site supervision throughout each and every phase of the construction project
- Coordinating the activities and tasks of direct client vendors • Organizing weekly or bi-weekly site meetings as needed and preparing minutes of meetings within a maximum duration of 48 hours
- Continuously arranging for inspections and testing as part of quality assurance

CLIENT CARE

Construction projects all over the world face some common challenges, including but not limited to: poorly defined objectives, budget constraints, time management, hazard management, and the list goes on. Throughout our 17+ years of experience, we've basically seen it all and we understand that conflicts exist in almost every project.

The most repetitive concern that unceasingly arises relates to how the quick-closeout procedure can be executed, its best practices, and what resources are in place to serve and maintain the space after move in. Understandably, newly established and constructed spaces demand observation and attentiveness to confirm that they're running at optimal efficiency.

For that reason, Prochem's Client Care team is ready to take the lead by coming into the scene during the last 5% of your project and carry on with supporting your space post closeout. The team checks that your space is always operating as intended and running full speed! Why do we care? Because we ultimately believe that your project closeout plan has the potential to either make or break your project and have long-lasting implications.



OUR CLIENT SERVICES INCLUDE

- Warranty reviews
- Commissioning the project and closeout
- Developing a final premises deficiency report and disseminating it to all involved parties for completion of tasks relating to their scope of work
- Ending all pending/open project permits • Creating and submitting copies of all project closeout documents to provide you with a comprehensive operational record, including:
- Drawings as built
- Fire and hydro test certificates
- Mechanical and electrical equipment manuals and warranties

ELV WORKS

ELV stands for Extra-Low Voltage. ELV Technologies is a fast-growing ELV, ICT & Security solution provider, serving customers with a comprehensive range of Low Current, IT & Security systems and services.

Being partnered with leading global brands, years of industry experience and in-depth knowledge of security best practices enables us to provide innovative solutions and delightful customer service. Our certified and experienced personnel have the skills and capability to offer 360-degree services right from design, supply, installation, testing, commissioning and maintenance of renowned products and solutions.

OUR COMPETENCIES

- Building Management Solution
- Access control & Time Attendance
- Video Surveillance system
- Public Address system
- Intrusion Alarm system
- Perimeter Intrusion Detection system
- Video Door phones
- Automation – Residential and Commercial
- Gate Barriers & Bollards
- Tripod Turnstiles & Flap barriers
- Swing Gates & Sliding Gate automation
- Sliding Glass doors & Swing door automation
- Fire detection and Alarm system
- Fire suppression system
- Structured cabling solution
- Anti-theft EAS system
- People counting system
- Audio-visual solutions
- Lighting control system
- Parking Management system
- Visitor Management system
- Time-lapse construction cameras
- Rooftop solar power solutions.
- Power backup solutions
- IT Hardware solution.



BUILDING MANAGEMENT SYSTEMS

Prochem has been designing Integrated Building Management System involving complex integrations with various MEP services (HVAC related chillers, pumps, terminal units, VFDs, Electrical related Meters, Diesel Generators, essential breakers, Water Management System, etc).

The Building Management is a specialised field that demands expertise in its design, engineering and deployment methods and the treatment we accord to your construction will be distinctive based on the asset's purpose and its make-up

A building management system (BMS), otherwise known as a building automation system (BAS), is a computer-based control system installed in buildings that controls and monitors the building's mechanical and electrical equipment such as ventilation, lighting, power systems, fire systems, and security systems

The main benefits of a BMS are to optimize your energy management strategies and minimize operational costs. Also it's needed for centrally data consolidation, increased operational savings, reduced risks, intelligent reporting of information and higher time threshold in decision making and management of HVAC, energy, security, digital video and life safety applications from a single workstation to allow facility-wide insight and control for better performance.



ACCESS CONTROL SOLUTIONS

Controlling access has never been easier with our state-of-the-art access control solutions. We help you achieve complete and fool proof access control with internal and external release electronic and physical mechanisms for Doors, Barriers and Turnstiles according to your requirements. You can choose credentials according to your convenience and budget, from key fobs, electronic smart cards of biometric solutions. Our access control systems are scalable and can be adapted and configured to suit any need. We offer both physical and logical access control systems solutions. Some of the access control solutions we provide are:

- Door Access Control
- Biometric & Card based solutions
- Time Attendance System
- Automatic Doors & Barriers
- Elevator Control System
- Video Integration
- Smart Automation with other ELV devices
- ANPR Integration with ACS

VIDEO SURVILLANCE SYSTEM

Prochem designs and installs complete CCTV systems including fully equipped control rooms as well as other security surveillance solutions.

- Analog/IP camera
- ANPR/Thermal camera
- DVR/NVR/NAS
- Central surveillance



FIRE ALARM SYSTEM

A fire alarm system is number of devices working together to detect and alert people through visual and audio appliances when smoke/fire is present. These alarms may be activated from smoke detectors, and heat detectors. They may also be activated via Manual fire alarm activation devices such as manual call points or pull stations.

We offer a wide range of products and systems for accurate, reliable fire detection and notification. Our solutions provide accurate, life-saving information at critical moments and are relied upon to help and protect offices, residential buildings, warehouses, retail stores and many other establishments



POWER BACKUP SOLUTION

Power Backup solution is became inevitable part of today's IT need of any businesses. Uninterrupted Power Supply (UPS) is an electrical apparatus that provides emergency power to a load when the input power source, typically mains power fails.

A UPS is typically used to protect IT hardware such as computers, servers, networking equipment or other equipment where an unexpected power disruption could cause injuries, fatalities, serious business disruption or data loss.

We supply power management solutions for your home, business or data center. For reliable, uninterruptible power supply (UPS) and protection products, trust us.



INTRUSSION DETECTION

Intrusion Detection System (IDS) is the security features which allows individuals to business houses to secure their premises post office hours or when they are not there. It ranges from overall premises security to micro level zone wise any particular area within premises security.

IDS are available in different flavors right from activating sounder outside premises to automatically calling predefined numbers to locking doors of that particular areas to camera recording that particular event to arming / disarming system remotely also. We are partner with all major IDS solution principles for such solutions.



HVAC SERVICES

Air conditioning is our main line of business and specialization.

We provide a full scope of HVAC solutions and services. Our comprehensive design team uses cutting edge software and tools to deliver best solutions from design and preparation of load calculation and drawings to the execution of final deliverable.

We professionally plan, design, install and commission all HVAC systems and provide excellence after sale services and spare parts. We supply A/C

Equipment, Air cooling units and all ducting accessories required for the installation of a complete HVAC systems and service the ducting works through our local workshop.

We are leading Air-conditioning specialist

- Heat Load Calculation of HVAC.
- Functional Knowledge of HVAC.
- Supply & Return Air Duct.
- Planning and designing with auto cad.
- Manufacturing the cold storage room.
- Refrigeration equipments.
- All types of wiring installation and Motor windings.
- All types of UG Cables Installation.
- All types of lighting assembling and installation in buildings.
- Indoor and outdoor stadium decorative dimensional poles.
- In depth knowledge of all the load calculation to arrange the proper wirings.
- Insulation & Installation of all kinds of electrical and technical projects.
- Manufacturing, Installation and Commissioning all types of Panel Board (PLC & Control LV drive) (Power Panel, Control Panel, Bus Ducts and Automation)



Our Skills

Our management team and Staff's are well versed to transform their efficient knowledge in relevant field of

- Planning & Project estimation.
- Determination of Project.
- Scheduling the duration of employee's appropriate work.
- Exact Transportation
- Risk Management.
- Implementation and operation.
- Feasible analysis.
- Time-Management.
- Market Research Analysis.
- Quality control.
- Cost Efficiency.
- Co-ordinating the technical services.



AMC (ANNUAL MAINTENNACE CONTRACT)

It is a good idea to check your system before the cooling or heating seasons starts by one of your maintenance contractor.

Types of AMC

Ordinary Annual Maintenance Contract (OAMC)

Comprehensive Annual Maintenance Contract (CAMC)

With Compressor

Without Compressor - Compressor does not come under free repair/replacement.

Benifits & futures of contract

1. Any breakdown call will be attended with immediate response on normal working hours.
2. Systematic check of all elecrical parts compressor & fan motor etc.
3. Cleaning of air filter & unit.
4. Cleaning of cooling coil & condensor coil etc.
5. Oiling/Lubrication the fan motor.
6. Checking overall performance and current consumptions.
7. Details report of the A/C unit will be made and will be handover to customer for their reference.
8. Servicing Air Conditioners Unit will be on Monthly/Alternate Monthly and Quarterly Basis as per Customer desires

Air Handling Units

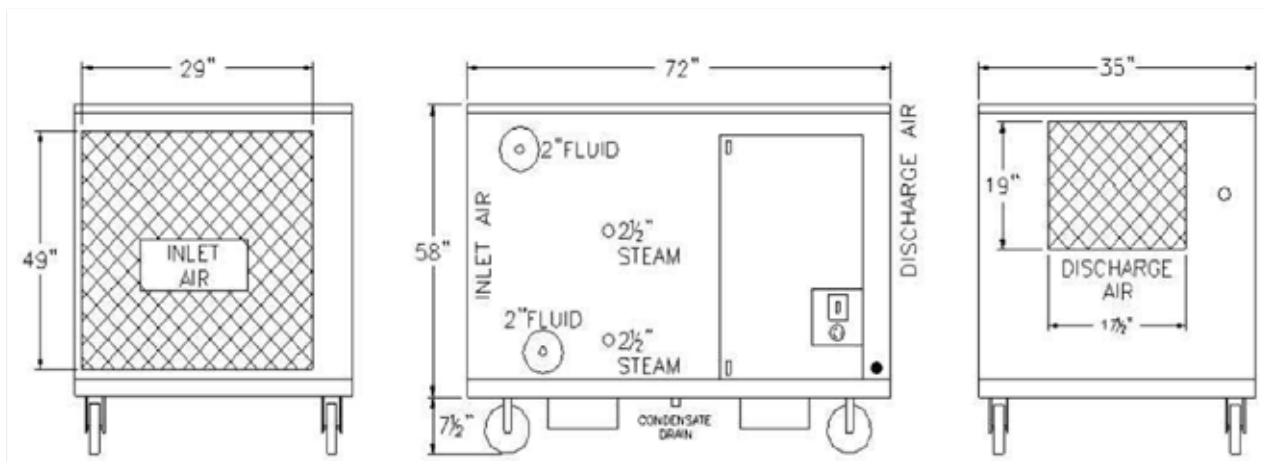
FEATURES

- Superioer Design
- Precise workmanship
- Unique Gasket arrangement
- Food Grade rubber gasket
- Double skin construction
- Unique design filter frame
- Low maintenence
- Highly reliable
- Standard & tailor Made design
- Low leakage dampers
- Available in verical or low height loft mounting design to suit site conditions
- These units are designed to offer customized solutions to suit requirements ranging CFM.

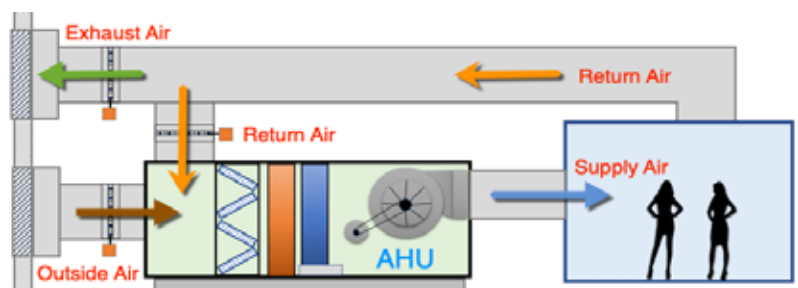


DESCRIPTION

- An Air Handling Unit is used to re-condition and circulated air part of heating, ventilating and air-conditioning system.
- The basic function of the AHU is to take in outside air, re-condition it and supply it as fresh air to a building.
- Depending on the required temperature of the re-conditioned air, the fresh air is either heated by a recovery unit or heating coil or cooled by a cooling coil.



These products are used in pharmaceutical companies, modular ot, clean room area, industrial area, process cooling application and production area



Chiller

FEATURES

- Wide range [As Per Customer Requirement]
- Large tonnage capabilities
- Longer Life
- Rapid cooling mode
- Air Cooled & water cooled both option.
- Quick restart / Silent operation
- Wide temperature operating range
- Touch screen option
- Attractive return on investment
- Demand control mode
- Easy and quick installation
- ASME stamp option
- Eco-friendly



Types of Chillers

Process Chillers

Scroll Chillers

- Air cooled & water cooled scroll chiller
- Inverter Scroll Chiller

Centrifugal Chillers

- Water cooled centrifugal Chiller
- Configured Oil-free Chiller

Screw Chillers

- Water cooled screw chillers with variable frequency drives
- Water cooled screw chillers configured series
- Air-cooled configured screw chillers high efficiency series

These products are used in industrial areas and many more as per customer needs

DESCRIPTION

- PROCHEM has comprehensive range a chillers is poised to power up various mechanical cooling process application across to different industries.
- Our Process chillers, centrifugal chillers, Scroll chillers and Screw chillers are a testament to our unmatched engineering capability.
- They are an ideal choice for commercial, industrial and institutional HVAC applications.
- PROCHEM is the pioneer and a leading provider of integrated end to end solution in the field of electro mechanical.
- We are committed to our customer that technology suits their needs and have introduced a wide variety of different types of chillers

Dx Unit

FEATURES

- Air cooled & water cooled both option
- Dx type inverter & non-inverter ODUs
- VRF type inverter ODUs
- Air / Water cooler chiller condensing units
- Microprocessor-based controllers
- Auto-restart after power is resumed
- Compact design
- Suitable for multi-tenant applications
- Phase wise Investment option
- Enhanced aesthetics
- Good relative humidity control
- Flexible application



TECHNOLOGY

- A DX unit uses refrigerant-based cooling and cools indoor air using a condensed refrigerant liquid.
- Direct Expansion means that the refrigerant expands to produce the cooling effect in a coil that is in direct contact with the conditioned air that will be delivered to the space.
- The DX unit uses a refrigerant vapor expansion and compression cycle to cool air coming in through a supply plenum and returns it to the area that needs cooling through the return.
- This central air conditioning system comes in either a split-system or a packaged unit.
- In a split system the components are separated with the evaporator located in an indoor cabinet and the compressor and condenser located in an outdoor cabinet.
- A packaged unit has the entire cooling system self-contained in one unit, with the evaporator coil, condenser, and compressor all located in one cabinet. This allows for flexibility in the installation since the unit can be either outside or indoors without too large of a footprint.

These products are used in pharmaceutical companies, modular ot, clean room area, industrial area, process cooling application and production area



Air Filtration Sysytem

FEATURES

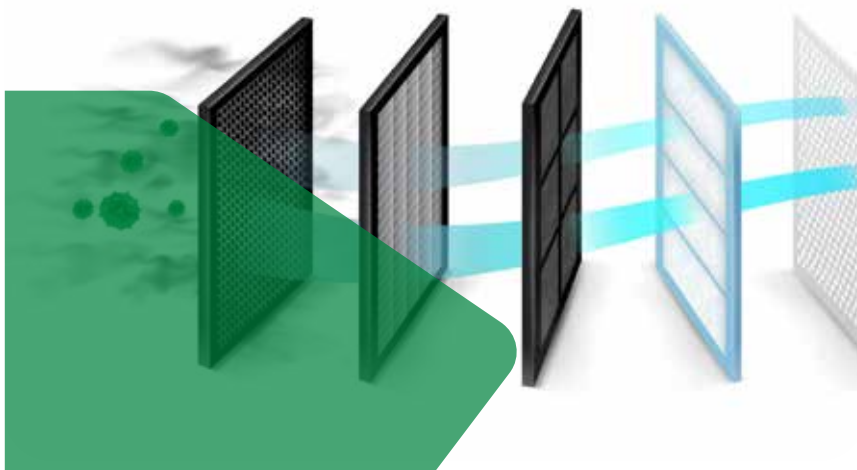
- Complete clean air
- Filter less magnetic Technology
- No extra or recurring cost
- Easy installation and maintenance
- High energy efficiency
- Lower cost and greater sustainability
- Return on investment



TECHNOLOGY

- Air filtration technique can remove air pollutants and effectively alleviate the deterioration of indoor air quality
- It evaluated different air filtration technologies by considering factors such as air quality improvement, filtering performance, energy and economic behaviour, thermal comfort and acoustic impact.
- An advanced air filtration technology that works on a micro-trapping process harnessing the combined effects of impingement, polarization and agglomeration.
- A dual polarity is created through an underlying dielectric mesh, trapping very fine particles and neutralising bio-aerosols from the air.
- It is a "Trap and Kill" process that removes PM2.5, disease-causing germs, and allergies in recirculating systems at exceptionally high efficiency without any recurring costs.
- Advanced filtration system for Hi-polluted area.

These products are used in offices, residencies, commercial and industrial area.



Dehumidifier

FEATURES

- Electric, steam, direct or indirect fired gas reactivation
- Easy to service desiccant rotor.
- Chain driven desiccant rotor for a lifetime of reliable performance
- Hinged access doors with air handler style handles for easy inspection and cleaning.
- Variable frequency drives
- Allen Bradley plc based controls for simple reliable operation
- Circuit breakers for over current protection
- UL 508A certified electrical panels
- Hinged filter access doors with quick release fasteners
- Enhanced aesthetics
- Good relative humidity control
- Flexible application



TECHNOLOGY

1.Desiccant Dehumidifier

- Desiccant dehumidifiers bond moisture with hydrophilic materials such as silica gel. cheap domestic units contains single use hydrophilic substance cartridges, gel and powder.
- Larger commercial units contain hot air recovery systems in order to remove humid air from outside the room.

2.Condensate Dehumidifier

- Condensate dehumidifiers use a refrigerator to collect water known as condensate, which is normally grey water but may at times be reused for industrial purposes. Some manufacturers offer reverse osmosis filters to turn the condensate into portable water.
- Some designs, such as the ionic membrane dehumidifier, dispose of water as a vapour rather than liquid.

These products are used in industrial area, pharmaceutical company and many more as per customer needs

VRF / VRV SYSTEM

FEATURES

- Higher efficient inverter compressors
- 100% inverter advantage
- Designed for high ambient temperature
- Specially designed ODU's
- Wide operating range Weather proof ODU's
- Quiet mode
- Emergency backup operation



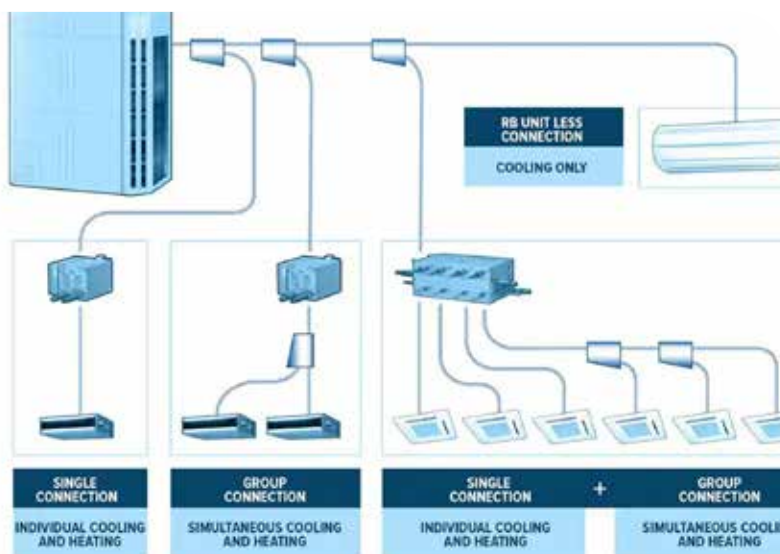
DESCRIPTION

- The VRF/VRV system is a multi-split type air conditioner for commercial building that uses variable refrigerant flow control to provide customers with the ability to maintain individual zone control in each room and floor of a building.

TECHNOLOGY

- The simplest explanation of VRF/VRV is to describe it as a large scale ductless HVAC system that can perform at a high capacity.
- The specific design of a VRF/VRV system varies based on application
- In general, VRF / VRV technology provides the ability for multiple indoor units or zones to operate on the same system.

These products are used in offices, residencies, commercial areas and many more as per customer needs



Electrical

Low Voltage (Down Stream)

Prochem Works engineers low voltage systems that distributes power where is needed, safely and reliably, while providing optimal protection for personnel and equipment.

Our range of low voltage distribution elements includes:

Main Distribution Boards (MDB) • Secondary Main Distribution Boards (SMDB)

• Final Distribution Boards (FDB) • Cables • Light Fixers • Sockets

• Glanding • Load Bank Tester From 40KVA to 400 KVA

Emergency power systems are extremely useful in many different settings such as residential homes, hospitals, research laboratories, data centers, and telecommunication centers. Belgium

Electromechanical works specializes in many emergency power systems that include:

• Generators • UPS

Plumbing

Prochem Work's puts lots of emphasis to ensure that every plumbing system installed is equipped with well sized and securely connected pipes, drains fittings, valves, valve assemblies and devices for the proper distribution of water.

• The Plumbing system specialized in:

• Sanitary and drainage systems

• Water distribution

• Water treatment

• Variable and fixed speed pumping system

• Solar Heaters

• Kitchen and laundry plumbing

• Irrigation systems and controls

• Sand traps and grease traps





Equipment Rental Services (Industrial & Cleaning)

PROCHEM heavy equipment rental division rents latest model from leading heavy equipment manufactures, maintained in peak conditional and serviced on-site by our mobile maintenance crew, providing operated, maintained and above rental crane services.

- We aim to offer high quality & reliable heavy equipment rental to a diverse customer need base.
- Excellent product & industry knowledge helps us in constantly striving to provide customer with better rental solution.

For Rent

- Cranes • Forklifts • Manlift
- Wheel loaders • Water tankers • Shovels (loader)
- Dump trucks • Generators • Welding sets • Trailers



Waste Management

Prochem offers an array of waste Management Services as well as Professional expertise and innovative solutions to all waste, including Hazardous waste management requirements. We provide safe, clean, environmentally waste collection and removal services. We help waste producers through the process of meeting the new requirements for pre-acceptance, which will enable us to continue to provide cost effective solutions for General Waste & Hazardous Waste disposal that will alleviate waste problems and provide peace of mind to customers.

After evaluating the different types of waste that will be generated on the site, we then formulate a comprehensive waste management plan on how each waste stream will be disposed of. We do this through sustainable means such as recycling wherever humanly possible to do so, then through the proper disposal channels.

We ensure that waste collection areas are kept clean, and that waste is collected and disposed of on a frequent basis to avoid any hazard or disturbance to tenants and the community.



Soft Services



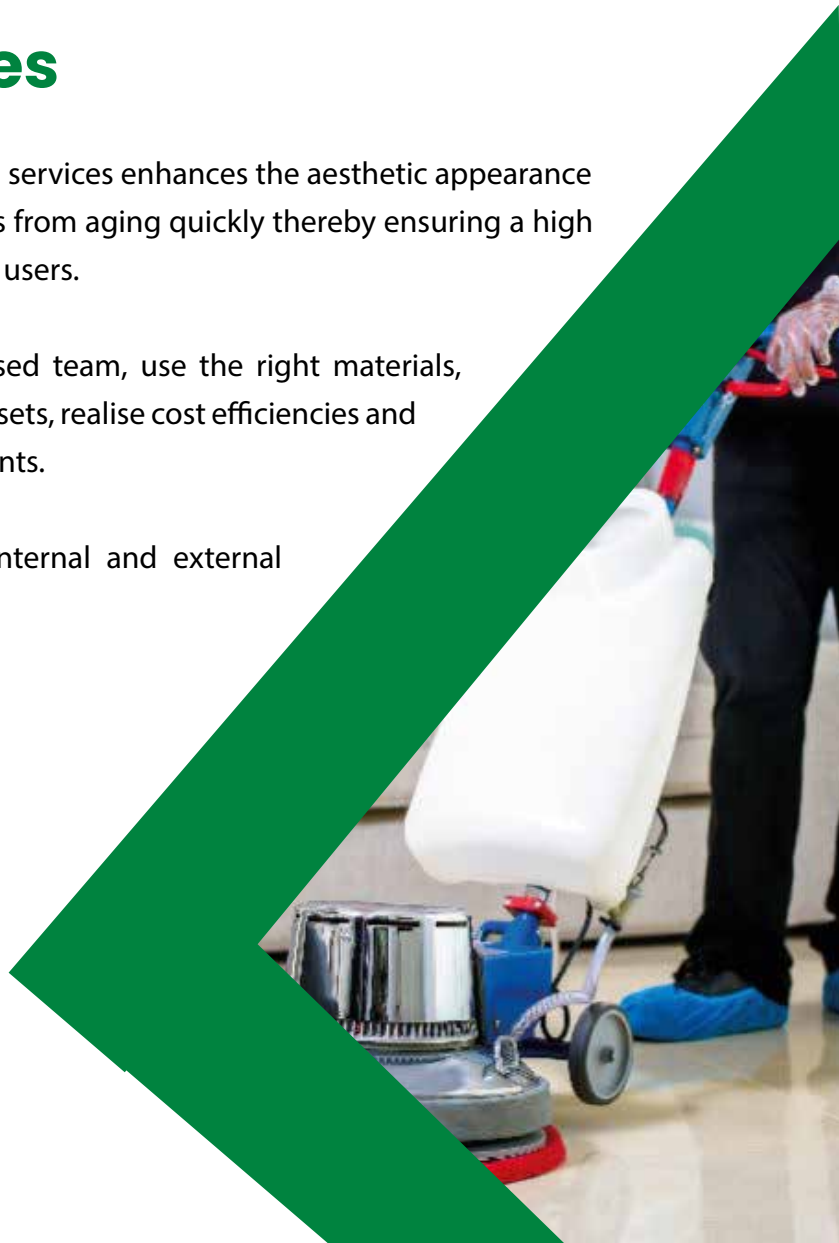
Cleaning Services

Prochem high quality, targeted cleaning services enhances the aesthetic appearance of a building as well as protecting assets from aging quickly thereby ensuring a high quality, fresh experience, for all building users.

Our highly trained and customer focused team, use the right materials, equipment and chemicals to preserve assets, realise cost efficiencies and provide a safe environment for all residents.

We offer a comprehensive range of internal and external cleaning and hygiene services, including:

- Deep Cleaning solutions
- Mall and Commercial towers cleaning
- Facade Cleaning External cleaning
- Domestic Cleaning service
- Water Tank Cleaning



Soft Services

Disinfection and Pest Control Service

We offer complete pest control & Disinfection Service with the latest technology for the safe disposal of all kinds of Bacteria, viruses, insects and rodents without harming any furniture, furnishings or any interior.

All our services are guaranteed to assure complete customer satisfaction by providing the best and the most effective solutions. We are available 24 hours a day, and we also provide same day services, to serve you better. Our reasonably priced services will not disappoint you, in terms of reliability and effectiveness.

Commercial Service

Prochem provide high quality efficient support services

Our services include:

- Office boys
- Cleaners/Janitors
- Porter services / Concierge
- Reception services
- General office support
- Technical maintenance support

Cleaning Equipments

- Walk Behind Scrubber Machine
- Ride On Scrubber Machine
- Upright Vacuum Machine
- Single Disk Machine
- Ride On Sweeper
- Machine Vacuum Cleaners



Manpower Supply

Civil & Mechanical Projects



The company is well known in the employment services industry. The company specializes in permanent, temporary and contract recruitment for Electrical, Mechanical & Civil Disciplines, Maintenance Work, Local Manpower Support & Transportation.

Skilled Craftmen

- Block masons
- Plaster masons
- Tile masons
- Carpenter
- Electricians (LV)
- Electricians (HV)
- Reinforcement workers
- Mechanics (petrol & diesel)
- Laborers
- Pipe fitters
- Pipe fabricators
- Industrial painter
- Plumbers
- Scaffolder
- Riggers
- Machinist
- Sheet metal fabricators
- Welders

Equipment Operators

- Crane operator
- Grader operator
- Backhoe operator
- Dozer operator
- Truck, dump truck drivers
- Fork lift operator
- Bus drivers
- Tanker drivers

Technicians

- Mechanical technicians
- Electronic technicians
- HVAC technicians
- Tools repair technicians



Manpower Supply

Civil & Mechanical Projects

Foremen

- Electrical foremen
- Welders foremen
- Pipe fitters foremen
- Mech. Tech. Foremen
- Steel fixers foremen
- Painting foremen
- HVAC tech . Foremen
- Plumbing foremen
- Workshop
- General foremen

Engineers

- Civil engineers
- Electrical engineers
- Mechanical engineers
- Instrumentation engineers
- Computer engineers
- Draftsmen (all disciplines)
- QA/QC engineers
- Loss prevention engineers
- Cost/scheduling engineers
- Surveyors

Cleaners & Helpers

- Male Supervisors
- Female Supervisors
- Male Janitors
- Female Janitors
- House Maids
- General Cleaners
- High Access Cleaners
- Cleaning Equipment Operators
- Skilled Manpower
- General Helpers
- Promoters
- Technicians



Electrical Supplies & IT Solutions

Electrical Supplies

The electrical products that we supply include:

- LED Panels / DB Panels
- PVC and GI Conduits
- MCCB, ELCB, Isolators
- Floor Boxes
- Cable Trays
- Switches / Sockets / Breakers

IT Solutions

Complete Office Setup

We cover and support IT asset tracking for all endpoint devices including desktops, laptops, printers, servers and network hardware—in addition to a variety of mobile devices including on-site and dispatched IT technician support.

- Networking and Cabling
- IP Phone Installation
- Server Installation
- Network printer setup
- IP Policy
- Server policy and security
- Ethernet cables
- Fabrication of ethernet cables as per ISO standards



Electrical Supplies & IT Solutions

Batteries



Cable Racks Management



Cable Ties for all kind of Electric & Networking Cables



Cables Labeling



Racks Management

Verticle / Horizontal



Electrical Supplies & IT Solutions

IT / Broadcasting

We believe in building meaningful relationships with our customers so that, no matter how small or large your project is, we always deliver a solution that exceeds your expectations.

Prochem can serve in the fields of Digital & Analog Broadcasting equipment. Television and Radio transmitters including all types of associated auxiliaries. We deal in different types of broadcasting equipment listed below;

- Broadcast equipment including spares as per required
- Audio, video & Ethernet cables
- Connectors such as XLR's, BNC's, Audio jacks, patch panels, Ethernet connectors
- Data Center free stand & wall mount racks 19"
- Sound systems which is including the mixer and accessories.
- Studio lighting with complete solution.
- We fabricating the sound proof rooms which allow to users to work with peace of mind



Cable IQ Qualifictaion Tester

• The Cable IQ Qualifier Kit is designed to verify and document that cabling systems were installed properly and will perform reliably. It ranges from home cabling networks to support voice, VoIP, 10/100/1000 Ethernet, and CATV. It replaces multiple tools for testing and troubleshooting all voice, data, audio/video, coax, and security wiring.

The equipment is also capable of generating test reports quickly for analysis and further action.

- Our services include providing intelligent wire map tests to verify the length, split pairs, and displays with an intuitive graphical interface to trace where a fault is located.
- Report generated in the picture displays Cable IQ's Intelligent Wire map which shows pin 6 open at far end of tested cable (130 ft/34 meters)



Electrical Supplies & IT Solutions

UPS

SINGLE-PHASE UPS

CONSUMER AND SOHO

Compact, easy to install and configure. They provide total, reliable protection of the installation, an excellent quality/price ratio and guarantee of a lasting investment.

SINGLE-PHASE UPS

CONVENTIONAL

On-line double conversion UPS with DSP microprocessors for precise, constant control of all measurements and of the power factor correction circuit (PFC). Transformer-free technology for high quality energy output with up to 96% efficiency.

SINGLE-PHASE UPS

MODULAR

Modular UPS enable the power supply to be sized exactly to requirements, without precluding any future expansion. They are made up of "standard" modules that can be added to existing configurations to increase their power or backup time. their innovative modular system, provides the highest possible level of redundancy.



Consumables & Other Supplies

Uniforms



Polar Jacket



Cleaning Materials



Consumables & Other Supplies

Lanyard



ID Card



Card Holder



Consumables & Other Supplies

Safety & Hygiene Products



Our Clients



مركز قطر للفعاليات الثقافية والتراثية
Qatar Cultural and Heritage Events Center



المكتب القطري الهولندي ذ.م.م
Al Maktab Al Qatari Al Hollandi W.L.L.



Tubin Const



Contact Us

Tel : +974 4432 4948

Mob : +974 5025 1741

E : sales@prochemqatar.com

w : www.prochemqatar.org

P.O Box, 37383 Doha, Qatar.

